

Pressure Range

From: 0.48 bar g. (6.96 psi g.)
To: 46.00 bar g. (667.00 psi g.)



Temperature Range

-15 °C to 200 °C (subject to seal material)



Flow Area

78.54 mm² (10.00 mm inlet bore diameter)



Connections

Inlet: 1/2" to 3/4" BSP, BSPT, NPT



Seal Materials

Viton®

	ASME	GA 81710	GA 82710
	PED / TÜV / ASME	GA 81110	GA 82110
	PED / TÜV	GA 81810	GA 82810
1	BODY	BRASS CW614N	BRASS CW614N
2	SEAL	VITON	VITON
3	PLUNGER	BRASS CW614N	BRASS CW614N
4	SPRING	ST. STEEL 1.4310 (302)	ST. STEEL 1.4401 (316)
5	ADJUSTER	BRASS CW614N	BRASS CW614N
6	LIFTING CAP	BRASS CW614N	BRASS CW614N
7	NAMEPLATE	ALUMINIUM ALLOY	ALUMINIUM ALLOY
8	WIRE & SEAL	ST. STEEL & LEAD	ST. STEEL & LEAD
9	ADAPTOR	-	ST. STEEL
10	DOWTY SEAL	-	VITON

Notes

- Relieving pressure is set pressure +10% (0.1 bar g. below 1.0 bar g.)
- Reseating pressure is set pressure -10% (0.3 bar g. below 3.0 bar g.)
- Below 2.40 bar g., PED certified only

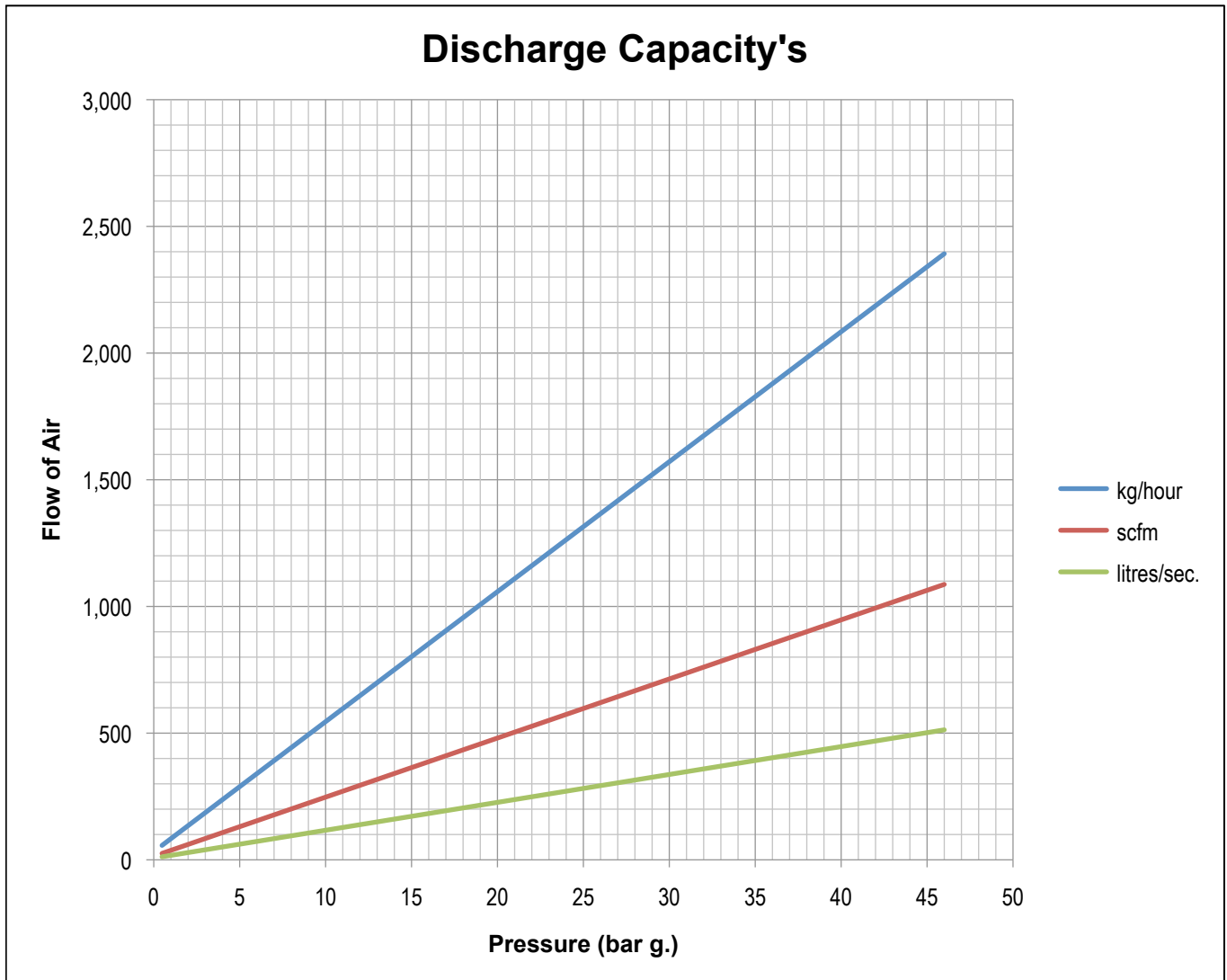
Approvals

- TÜV Germany (AD-Merkblatt A2)
- BS EN ISO 4126-1
- ASME Section VIII Division 1
- PED 97/23/EC

DN10

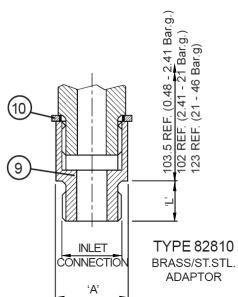
Seetru Limited
Albion Dockside Works
Bristol BS1 6UT
England

Tel: +44 (0) 117 927 9204
Fax: +44 (0) 117 929 8193
sales@seetru.co.uk
www.seetru.co.uk



For assistance in sizing a valve to your specifications please contact the Seetru technical sales desk.

Alternate Bottom Fitting



DN10

Seetru Limited
Albion Dockside Works
Bristol BS1 6UT
England

Tel: +44 (0) 117 927 9204
Fax: +44 (0) 117 929 8193
sales@seetru.co.uk
www.seetru.co.uk