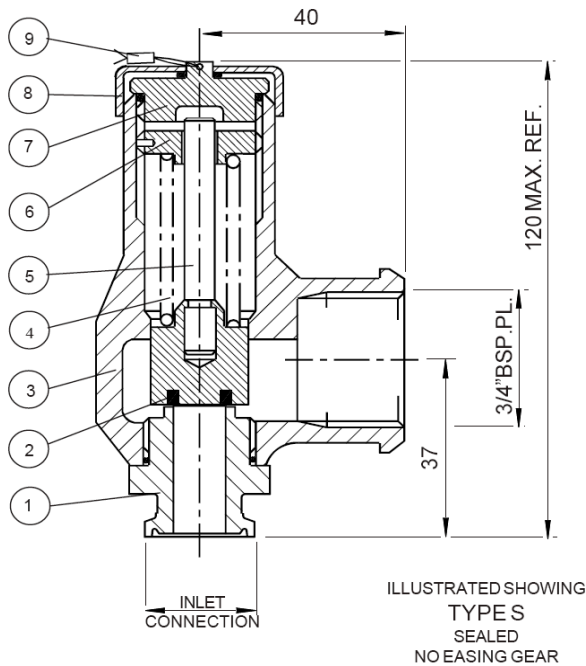


GP 64610, 64710, 64110

10 mm Nominal Bore Piped Discharge Safety Relief Valve
For Compressed Air & Gases
PED, TÜV, ASME Approved

CLEAN SERVICE



Pressure Range

From: 0.48 bar g. (6.96 psi g.)
To: 55.20 bar g. (800.40 psi g.)



Temperature Range

-40 °C to 190 °C (subject to seal material)



Flow Area

70.88 mm² (9.50 mm inlet bore diameter)



Connections

Inlet: 1/2" to 1" TRI-CLAMP
Outlet: 3/4" BSP

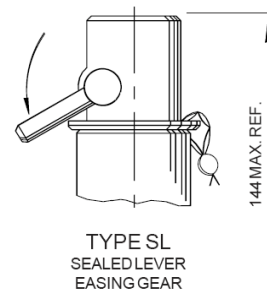


Seal Materials

Ethylene Propylene
Perfluoroelastomer

	ASME	GP 64710
	PED / TÜV / ASME	GP 64110
	PED / TÜV	GP 64610
1	INLET SEAT	ST. STEEL 1.4404 (316L)
2	PLUNGER	ST. STEEL 1.4404 (316L)
3	BODY	ST. STEEL 1.4408 (316)
4	SPRING	ST. STEEL 1.4310 (302)
5	SPINDLE	ST. STEEL 1.4057 (431)
6	ADJUSTER	ST. STEEL 1.4408 (316)
7	CAP	ST. STEEL 1.4408 (316)
8	COVER	ST. STEEL
9	WIRE & SEAL	ST. STEEL & LEAD

Alternate Top Fitting



Notes

- Maximum permissible built up back pressure is 10% of set pressure
- Stable operation on flows down to 50% of valve rated capacity
- Relieving pressure is set pressure +10% (0.3 bar g. below 1.55 bar g.)
- Reseating pressure is set pressure -10% (0.3 bar g. minimum)
- Below 1.55 bar g., PED certified only
- Tri-Clamp® compatible generally in accordance with ASME BPE 2005 & BS 4825-3.

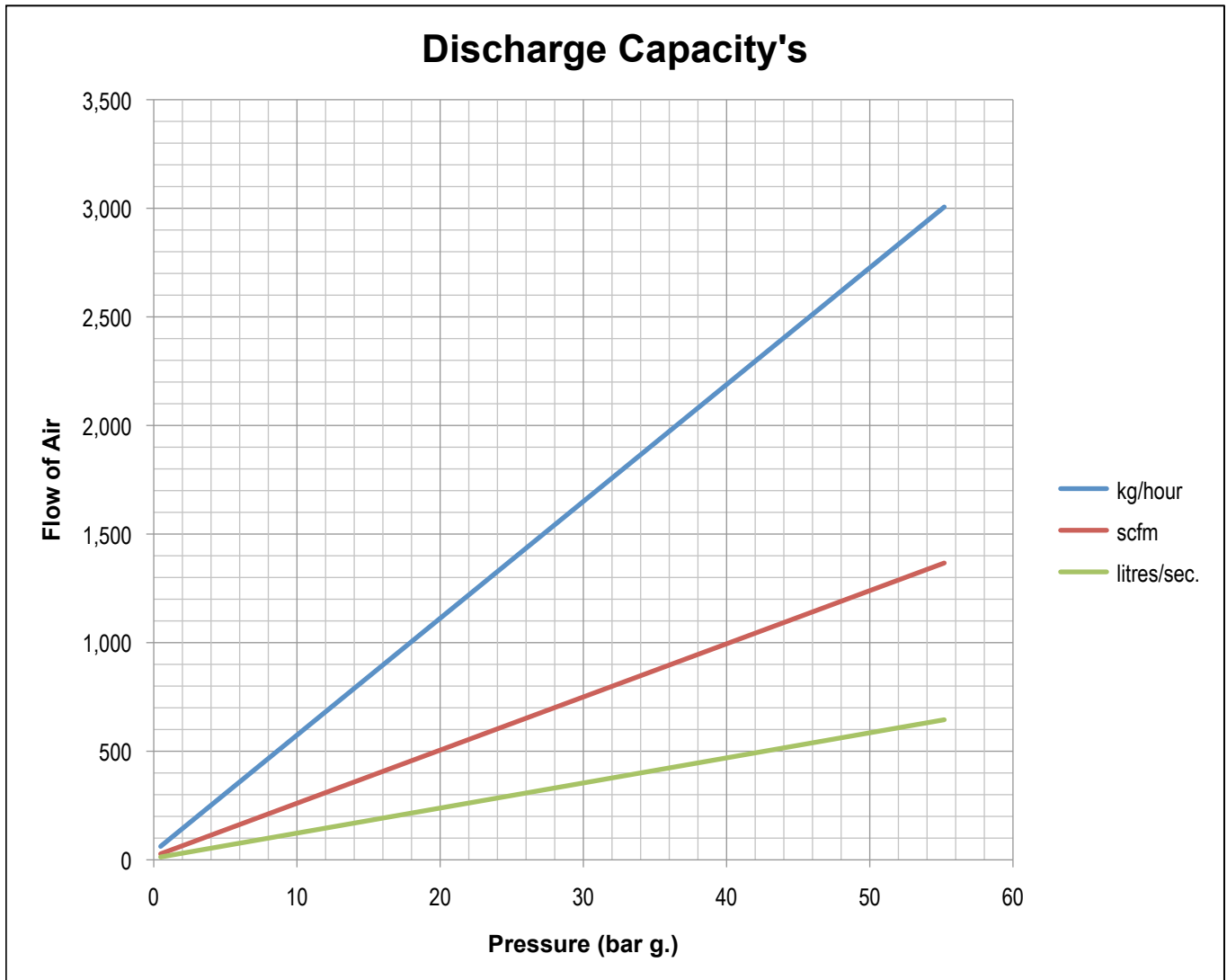
Approvals

- TÜV Germany (AD-Merkblatt A2)
- BS EN ISO 4126-1
- ASME Section VIII Division 1
- PED 97/23/EC

DN10

Seetru Limited
Albion Dockside Works
Bristol BS1 6UT
England

Tel: +44 (0) 117 927 9204
Fax: +44 (0) 117 929 8193
sales@seetru.co.uk
www.seetru.co.uk



For assistance in sizing a valve to your specifications please contact the Seetru technical sales desk.

Application

1. Safety valve for food industry & other hygienic applications including clean steam & gas applications.
2. For protection of installations in which clean service is required only on the inlet. e.g. normal operation wetted parts.
3. Generally in accordance with 'ASME BPE 2005 Bioprocessing Equipment'.
4. Economic design giving small compact size, with high discharge capacities.
5. Elastomer soft sealing for high level sealing tightness at operating pressure, with minimum leakage for cost effective operation.

Surface Finish

Process Contact Surface

In accordance with ASME BPE-2005 Table SF-5.

Surface designation Ra Max 15 µinches, 0.4 µm, Electropolished.

Other Surfaces

Not greater than 60 µinches, 1.5 µm.

Seal Material

Elastomer soft sealing specifically developed for food & pharmaceutical industries.

Compliant to

1. FDA 21 CFR 177.2600
2. United States Pharmacopoeia (USP) Class VI
3. SP3A Sanitary Standards for Multiple Use Rubber Dairy Equipment No 18-03.

DN10

Seetru Limited
Albion Dockside Works
Bristol BS1 6UT
England

Tel: +44 (0) 117 927 9204
Fax: +44 (0) 117 929 8193
sales@seetru.co.uk
www.seetru.co.uk