

### Pressure Range

From: 5.40 bar g. (78.30 psi g.)  
To: 25.70 bar g. (372.65 psi g.)



### Temperature Range

Up to: 200 °C (subject to seal material)



### Flow Area

226.98 mm<sup>2</sup> (17.00 mm inlet bore diameter)



### Connections

Inlet: 1" BSP, BSPT, NPT  
Outlet: 1 1/2" BSP



### Seal Materials

Nitrile  
Viton®  
Neoprene  
Ethylene Propylene

	LP 67018	LP 68018	LP 69018
1 INLET SEAT	BRASS	ST. STEEL	ST. STEEL
2 SEAL RETAINER	BRASS	ST. STEEL	ST. STEEL
3 'O' RING	TO SUIT	TO SUIT	TO SUIT
4 PLUNGER	BRASS	ST. STEEL	BRASS
5 BODY	BRONZE	ST. STEEL	BRONZE
6 SPRING	ST. STEEL	ST. STEEL	ST. STEEL
7 SPINDLE	ST. STEEL	ST. STEEL	ST. STEEL
8 ADJUSTER	BRASS	ST. STEEL	BRASS
9 CAP	BRASS	ST. STEEL	BRASS
10 NAMEPLATE	ALUMINIUM ALLOY	ALUMINIUM ALLOY	ALUMINIUM ALLOY
11 WIRE & SEAL	ST. STEEL & LEAD	ST. STEEL & LEAD	ST. STEEL & LEAD
12 SCREW	ST. STEEL	ST. STEEL	ST. STEEL

### Notes

- Relieving pressure is set pressure +25%
- Reseating pressure is set pressure -20% (0.6 bar g. below 3 bar g.)

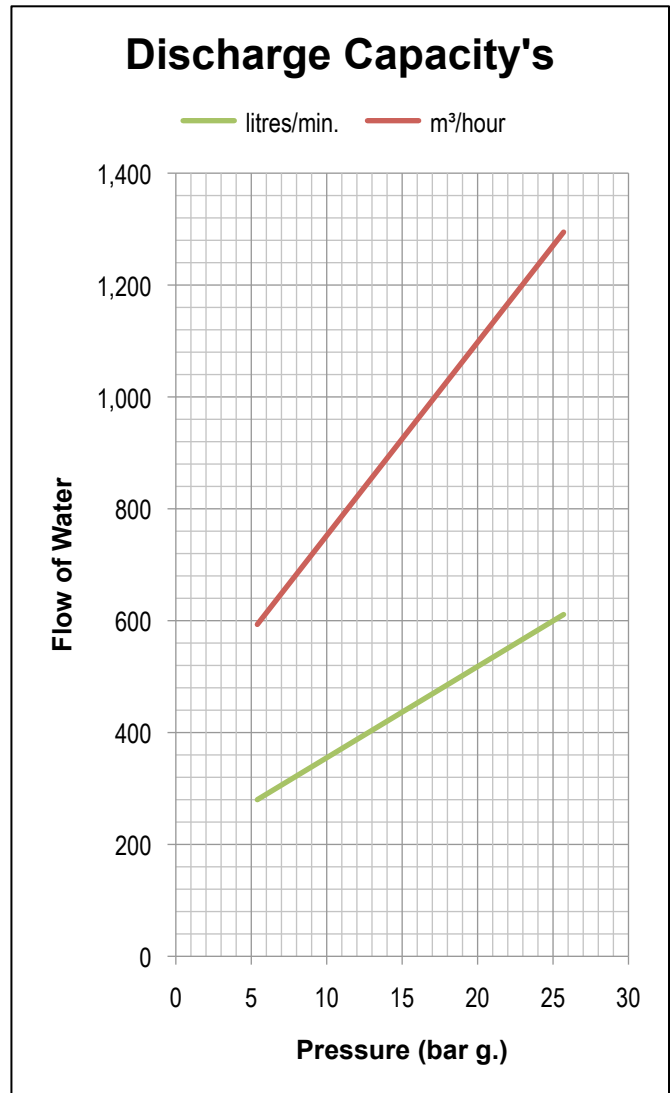
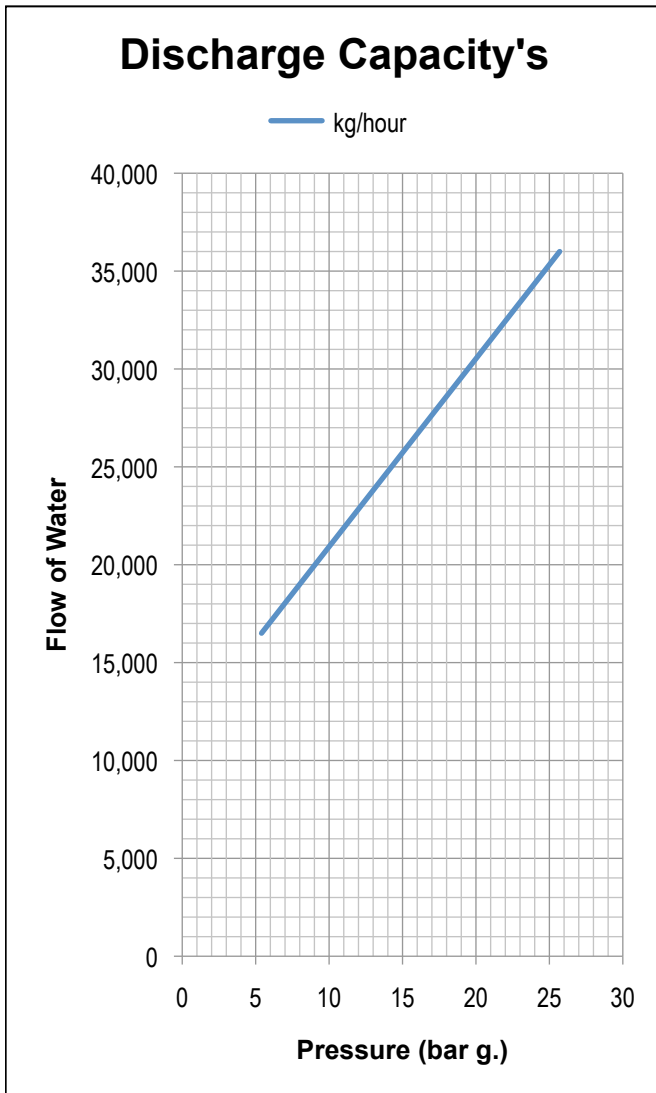
### Approvals

- TÜV Germany (AD-Merkblatt A2)
- BS EN ISO 4126-1
- PED 97/23/EC

# DN18

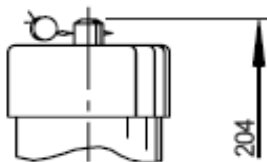
Seetru Limited  
Albion Dockside Works  
Bristol BS1 6UT  
England

Tel: +44 (0) 117 927 9204  
Fax: +44 (0) 117 929 8193  
sales@seetru.co.uk  
www.seetru.co.uk



For assistance in sizing a valve to your specifications please contact the Seetru technical sales desk.

### Alternate Top Fittings



**TYPE S**  
SEALED  
NO EASING GEAR

**DN18**

Seetru Limited  
Albion Dockside Works  
Bristol BS1 6UT  
England

Tel: +44 (0) 117 927 9204  
Fax: +44 (0) 117 929 8193  
sales@seetru.co.uk  
www.seetru.co.uk