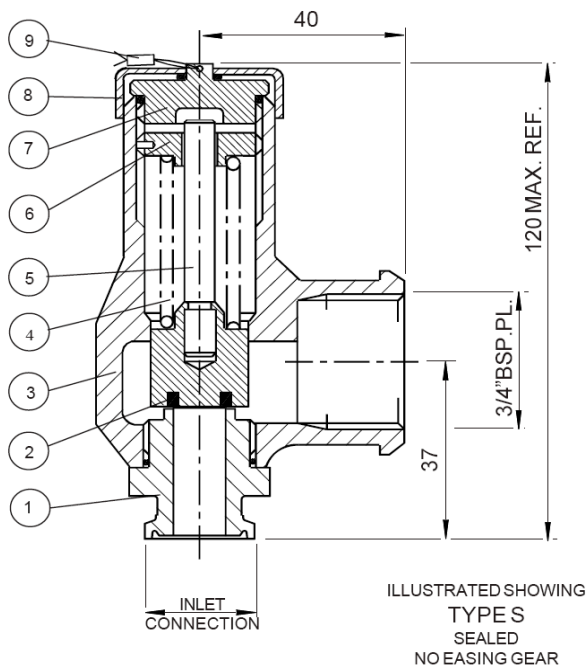


## CLEAN SERVICE



### Pressure Range

From: 0.76 bar g. (11.02 psi g.)  
To: 30.00 bar g. (435.00 psi g.)



### Temperature Range

Up to: 190 °C (subject to seal material)



### Flow Area

70.88 mm<sup>2</sup> (9.50 mm inlet bore diameter)



### Connections

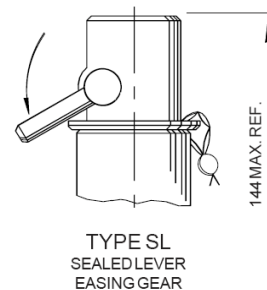
Inlet: 1/2" to 1" TRI-CLAMP  
Outlet: 3/4" BSP



### Seal Materials

Ethylene Propylene  
Perfluoroelastomer

## Alternate Top Fitting



		LP 68010
1	INLET SEAT	ST. STEEL 1.4404 (316L)
2	PLUNGER	ST. STEEL 1.4404 (316L)
3	BODY	ST. STEEL 1.4408 (316)
4	SPRING	ST. STEEL 1.4310 (302)
5	SPINDLE	ST. STEEL 1.4057 (431)
6	ADJUSTER	ST. STEEL 1.4408 (316)
7	CAP	ST. STEEL 1.4408 (316)
8	COVER	ST. STEEL
9	WIRE & SEAL	ST. STEEL & LEAD

## Notes

- Relieving pressure is set pressure +25%
- Reseating pressure is set pressure -20% (0.6 bar g. below 3.0 bar g.)
- Tri-Clamp® compatible generally in accordance with ASME BPE 2005 & BS 4825-3.
- Maximum pressure is subject to clamp pressure rating.

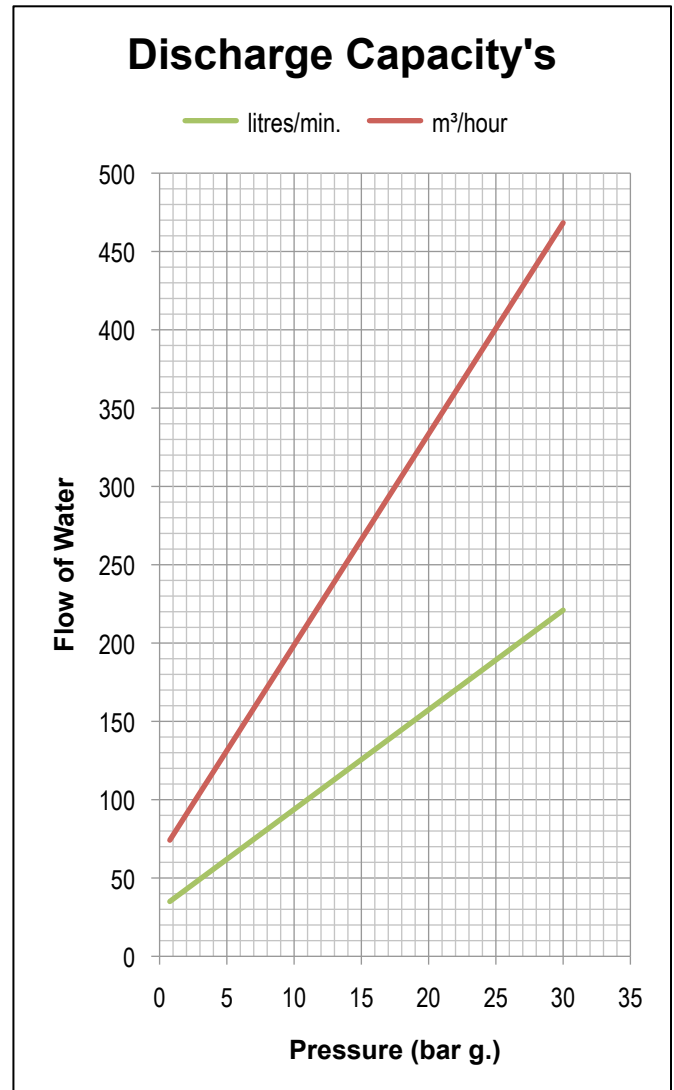
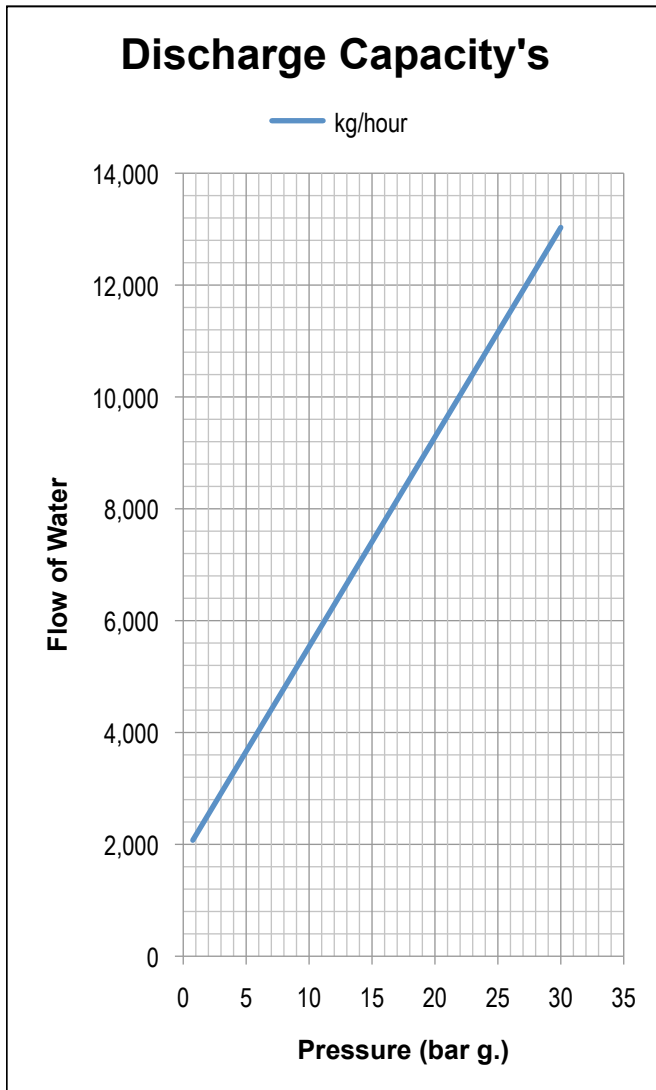
## Approvals

- TÜV Germany (AD-Merkblatt A2)
- BS EN ISO 4126-1
- PED 97/23/EC

# DN10

Seetru Limited  
Albion Dockside Works  
Bristol BS1 6UT  
England

Tel: +44 (0) 117 927 9204  
Fax: +44 (0) 117 929 8193  
sales@seetru.co.uk  
www.seetru.co.uk



For assistance in sizing a valve to your specifications please contact the Seetru technical sales desk.

## Application

1. Safety valve for food industry & other hygienic applications including clean steam & gas applications.
2. For protection of installations in which clean service is required only on the inlet. e.g. normal operation wetted parts.
3. Generally in accordance with 'ASME BPE 2005 Bioprocessing Equipment'.
4. Economic design giving small compact size, with high discharge capacities.
5. Elastomer soft sealing for high level sealing tightness at operating pressure, with minimum leakage for cost effective operation.

## Surface Finish

### Process Contact Surface

In accordance with ASME BPE-2005 Table SF-5.

Surface designation Ra Max 15 µinches, 0.4 µm, Electropolished.

### Other Surfaces

Not greater than 60 µinches, 1.5 µm.

## Seal Material

Elastomer soft sealing specifically developed for food & pharmaceutical industries.

Compliant to

1. FDA 21 CFR 177.2600
2. United States Pharmacopoeia (USP) Class VI
3. SP3A Sanitary Standards for Multiple Use Rubber Dairy Equipment No 18-03.

**DN10**

Seetru Limited  
Albion Dockside Works  
Bristol BS1 6UT  
England

Tel: +44 (0) 117 927 9204  
Fax: +44 (0) 117 929 8193  
sales@seetru.co.uk  
www.seetru.co.uk