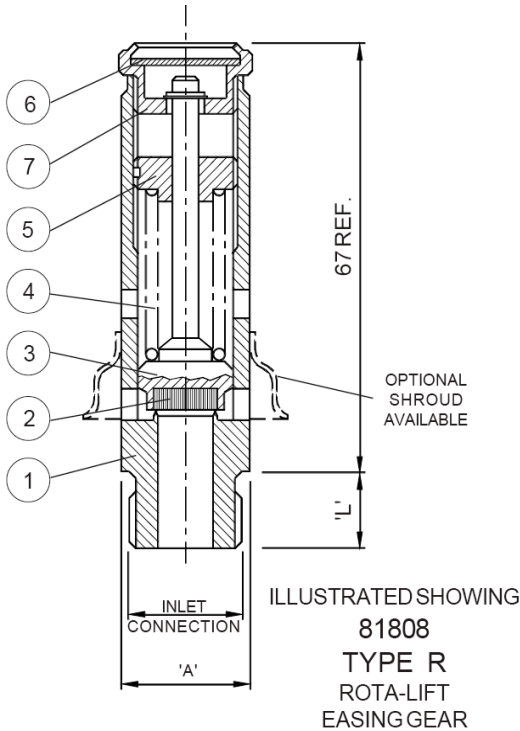


# GA 81808, 81708, 81108

8 mm Nominal Bore Atmospheric Discharge Safety Relief Valve  
For Compressed Air & Gases  
PED, TÜV, ASME Approved



### Pressure Range

From: 0.55 bar g. (7.98 psi g.)  
To: 21.00 bar g. (304.50 psi g.)



### Temperature Range

-15 °C to 200 °C (subject to seal material)



### Flow Area

50.27 mm<sup>2</sup> (8.00 mm inlet bore diameter)



### Connections

Inlet: 1/4" to 1/2" BSP, BSPT, NPT



### Seal Materials

Viton®

	ASME	GA 81708	GA 82708
	PED / TÜV / ASME	GA 81108	GA 82108
	PED / TÜV	GA 81808	GA 82808
1	BODY	BRASS CW614N	BRASS CW614N
2	SEAL	VITON	VITON
3	VALVE DISC	BRASS CW614N	BRASS CW614N
4	SPRING	ST. STEEL 1.4310 (302)	ST. STEEL 1.4401 (316)
5	ADJUSTER	BRASS CW614N	BRASS CW614N
6	NAMEPLATE	ALUMINIUM ALLOY	ALUMINIUM ALLOY
7	CAP	BRASS CW614N	BRASS CW614N
8	ADAPTOR	-	ST. STEEL
9	DOWTY SEAL	-	VITON

### Notes

- Relieving pressure is set pressure +10% (0.1 bar g. below 1.0 bar g.)
- Reseating pressure is set pressure -10% (0.3 bar g. below 3.0 bar g.)
- Below 3.00 bar g., PED certified only

### Approvals

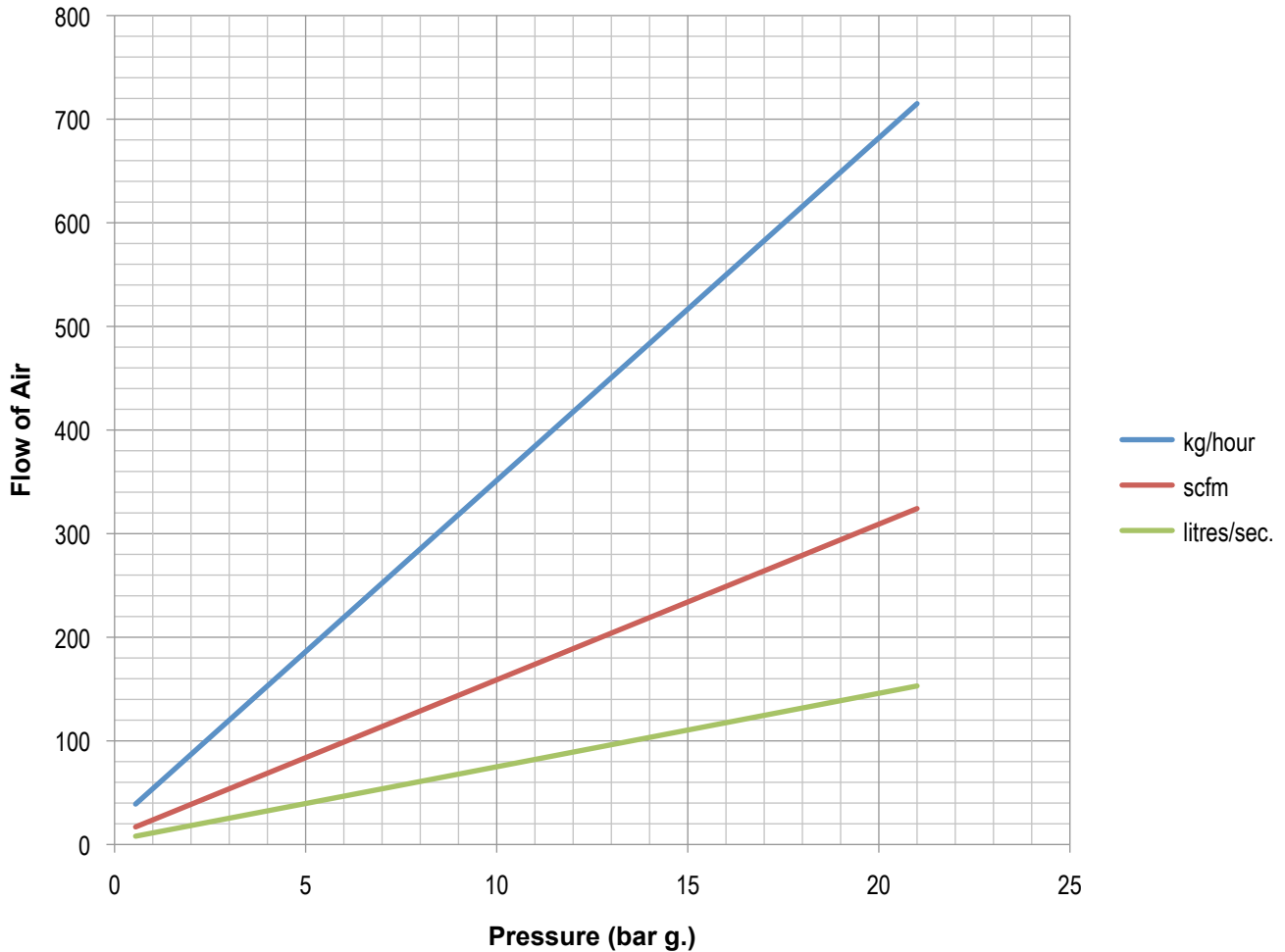
- TÜV Germany (AD-Merkblatt A2)
- BS EN ISO 4126-1
- ASME Section VIII Division 1
- PED 97/23/EC

# DN8

Seetru Limited  
Albion Dockside Works  
Bristol BS1 6UT  
England

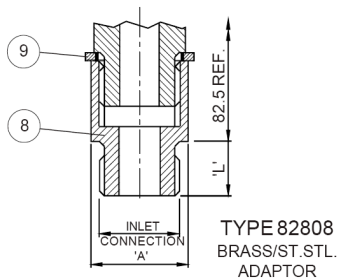
Tel: +44 (0) 117 927 9204  
Fax: +44 (0) 117 929 8193  
sales@seetru.co.uk  
www.seetru.co.uk

### Discharge Capacity's



For assistance in sizing a valve to your specifications please contact the Seetru technical sales desk.

### Alternate Bottom Fitting



**DN8**

Seetru Limited  
Albion Dockside Works  
Bristol BS1 6UT  
England

Tel: +44 (0) 117 927 9204  
Fax: +44 (0) 117 929 8193  
sales@seetru.co.uk  
www.seetru.co.uk